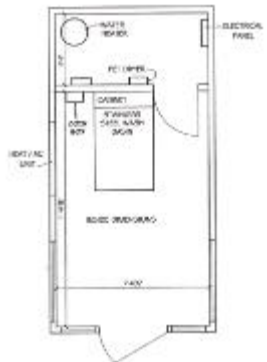




Vets Helping Vets Help Themselves



So, you say you'd like to have a dog wash but you don't have the room to install it. Well, if you've got room anywhere on your lot you can have a complete Self-Serve Dog Wash operation delivered to your site in the freestanding Modular Pet Wash Building. The Modular Pet Wash Building is delivered to your location completely assembled, wired, and ready to go. This first class heavy-duty structure comes fully equipped with everything you need to be in the dog washing business in a matter of days. And the best part is, it only takes up 2 parking spaces.

The modular building comes standard with these features:



- Colorful blue commercial grade steel roof for eye-catching appeal.
- Durable cement stucco exterior building finish.
- Heavy duty I beam frame with support braces.
- Commercial grade steel studded walls are fully insulated to ensure interior comfort in any weather conditions.
- Anodized aluminum framed glass windows & store front door.
- Automatic 7-day programmable timer controlled door locks & lights.
- 50 Gal. commercial grade "Bradford & White" hot water heater.
- Friederich commercial grade 12,000 BTU heater & 14,000 BTU air conditioning unit.
- 10" automatic exhaust fan activates when Dog Wash is in use.
- Maintenance free, bright white, Extrutech paneled walls & ceiling.
- Separate 4' x 8' utility & control room with locking access door.
- 300-Watt exterior light with photocell.
- Stainless steel tub w/rubber mat & rubber coated ramp
- Stainless steel control panel
- Deluxe stainless steel coin box w/bill acceptor w/10-position rotary switch
- Optional credit card acceptance system
- 2 motor, dual speed dryer
- Chemical start-up package
- Deluxe window decal and tub graphics package
- 3/4" Honeywell blending valve
- Showerhead w/easy pull trigger and stainless steel flexible hose
- Stainless steel tub ring w/attached leash restraints
- Heavy-duty hair trap strainer

All you need to provide for a successful installation is:

- 8½' X 16' flat slab base
- 100 AMP electrical service
- Water & sewer line
- Have finished concrete floor poured after installation of building

As you can see from these dimensions, the Modular Pet Wash Building is compact and takes up minimum space in your lot, yet gives spacious room to dog owners to maneuver inside comfortably.

Dimensions:

- Exterior - 8½' W x 16' L x 10' 2" H
- Interior Ceiling - 8'
- Interior Wash Room - 12' x 8'
- Interior Utility Room - 4' x 8'